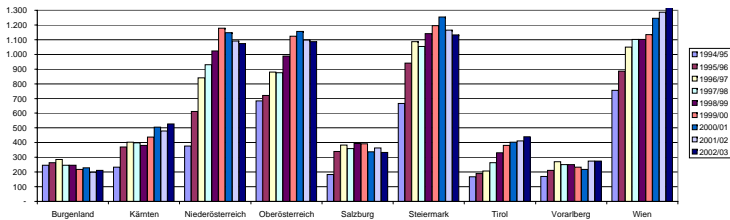


Volksschulen, Kinder mit spF

Bundesland	1994/95	1995/96	1996/97	1997/98	1998/99	1999/00	2000/01	2001/02	2002/03	2003/04	2004/05
Burgenland	247	263	286	245	247	218	228	198	212	223	254
Kärnten	232	371	403	399	381	438	505	478	526	533	553
Niederösterreich	376	612	841	929	1.024	1.179	1.147	1.090	1.073	1.021	1115
Oberösterreich	683	721	879	876	988	1.124	1.156	1.097	1.086	1.248	
Salzburg	184	340	383	359	394	392	337	364	333	337	275
Steiermark	666	940	1.087	1.053	1.142	1.195	1.254	1.166	1.133	1.272	1276
Tirol	168	189	207	263	331	380	402	411	439	433	401
Vorarlberg	169	211	270	250	251	234	217	275	275		
Wien	756	886	1.050	1.101	1.101	1.134	1.246	1.286	1.378	1.460	1249
Gesamt:	3.481	4.533	5.406	5.475	5.859	6.294	6.492	6.365	6.455		

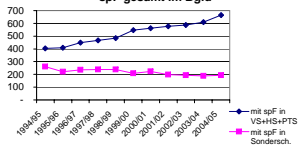
SchülerInnen mit spF in VS



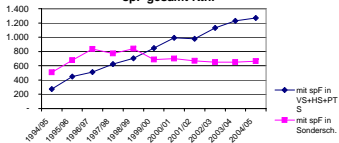
mit spF in VS+HS+PTS

Bundesland												im Jahr 03/04
												Prozent aller Kd.haben spF
	1994/95	1995/96	1996/97	1997/98	1998/99	1999/00	2000/01	2001/02	2002/03	2003/04	2004/05	
Burgenland												
mit spF in VS+HS+PTS	403	409	449	466	483	546	562	577	586	609	664	3,98%
mit spF in Sondersch.	260	221	237	238	238	208	223	198	192	189	194	
Kärnten												
mit spF in VS+HS+PTS	275	447	513	624	705	850	993	977	1.132	1.229	1.272	4,08%
mit spF in Sondersch.	507	677	833	774	841	686	699	670	652	652	663	
Niederösterreich												
mit spF in VS+HS+PTS	432	703	945	1.212	1.485	1.912	2.051	2.168	2.267	2.375	2.490	4,30%
mit spF in Sondersch.	2.334	2.712	3.104	2.881	2.736	3.016	3.188	3.114	3.221	3.219	3.383	
Oberösterreich												
mit spF in VS+HS+PTS	1.050	1.272	1.646	1.931	2.260	2.649	2.876	2.750	2.828	3.131	3.320	3,64%
mit spF in Sondersch.	1.972	2.387	2.515	2.146	2.137	1.843	1.840	1.867	1.803	1.597	1.526	
Salzburg												
mit spF in VS+HS+PTS	254	427	522	510	701	781	779	872	802	884	799	4,16%
mit spF in Sondersch.	712	1.075	987	1.047	982	919	996	878	937	1.034	1.045	
Steiermark												
mit spF in VS+HS+PTS	883	1.297	1.538	1.784	2.113	2.415	2.607	2.606	2.680	2.969	3.071	3,80%
mit spF in Sondersch.	1.078	1.341	1.243	1.006	923	819	760	713	730	598	572	
Tirol												
mit spF in VS+HS+PTS	226	273	286	391	500	610	742	799	877	911	929	3,42%
mit spF in Sondersch.	1.157	1.215	1.096	1.247	1.225	1.131	1.194	1.169	1.221	1.270	1.258	
Vorarlberg												
mit spF in VS+HS+PTS	185	239	318	343	389	426	421	513	560			0,00%
mit spF in Sondersch.	809	873	787	740	834	814	1.006	1.009	1.054			
Wien												
mit spF in VS+HS+PTS	1.056	1.277	1.619	1.900	2.164	2.445	2.476	2.803	3.175	3.376	3.089	6,71%
mit spF in Sondersch.	2.493	3.447	3.098	3.943	3.545	3.743	3.696	3.719	3.656	3.350	3.154	

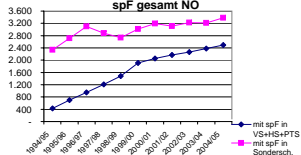
spF gesamt im Bgld



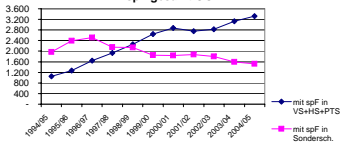
spF gesamt Ktn.

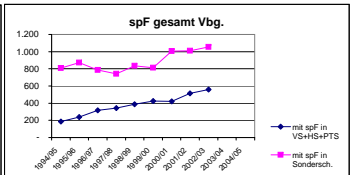
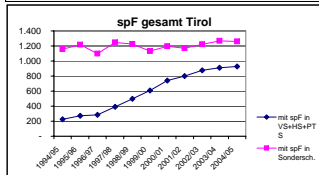
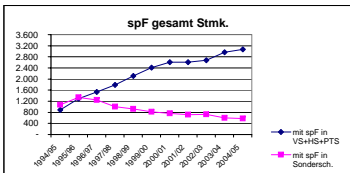
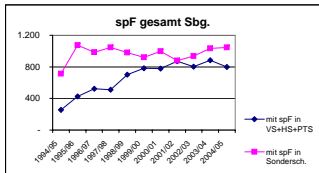


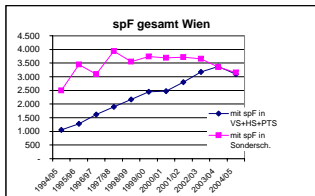
spF gesamt NÖ



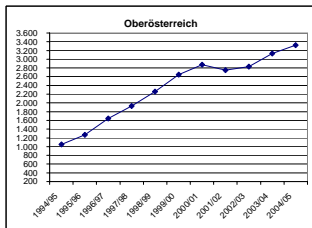
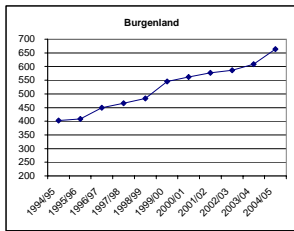
spF gesamt OÖ



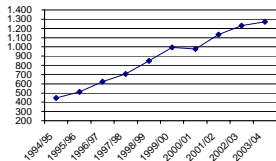




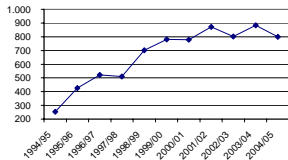
SchülerInnen mit spF in VS+HS+PTS in den Bundesländern

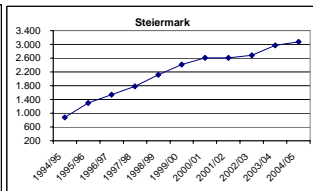
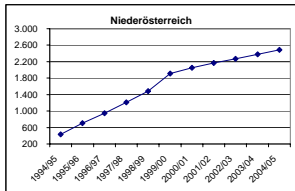


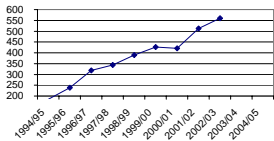
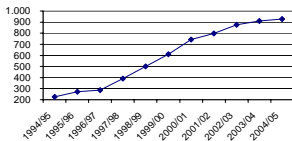
Kärnten



Salzburg





Vorarlberg**Tirol****Wien**